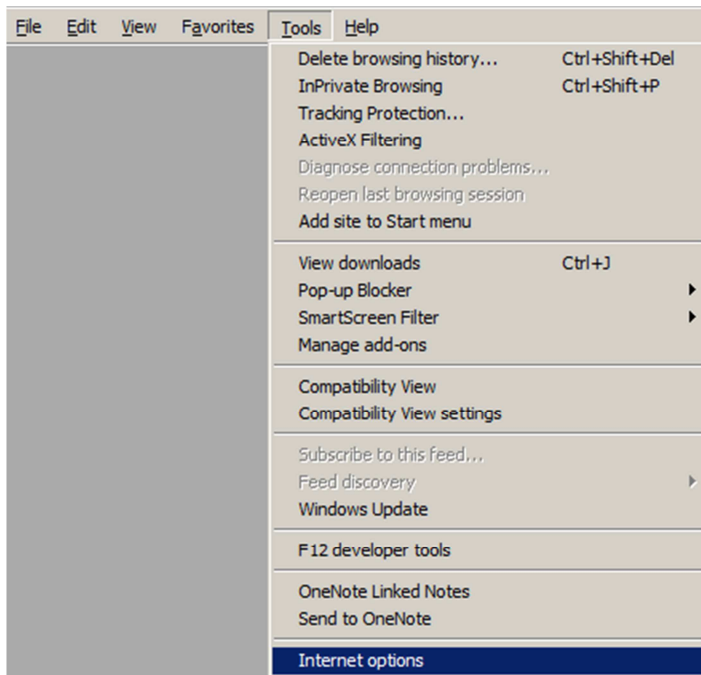


How to connect to Citrix from home

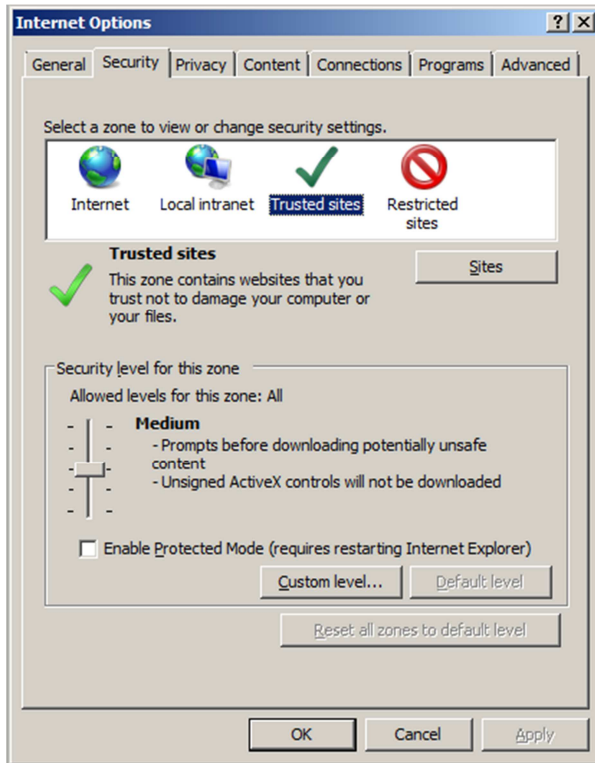
Browse to "http://www.sgt.ca" . In the "Access" menu click on "Citrix"



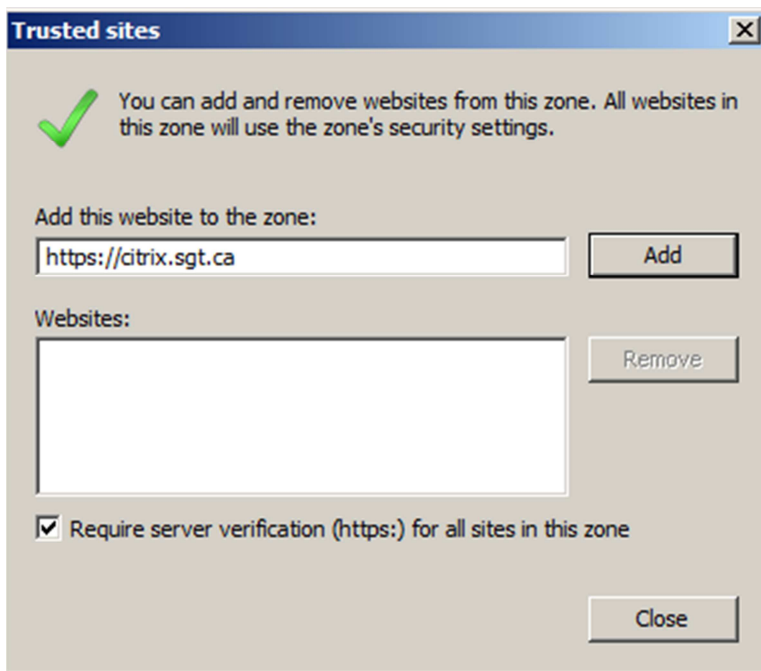
Then, go into your Internet Explorer tool menu then into option (if using Internet Explorer 9, press ALT to show the menu).



Select the "Security" tab and click "Trusted sites"

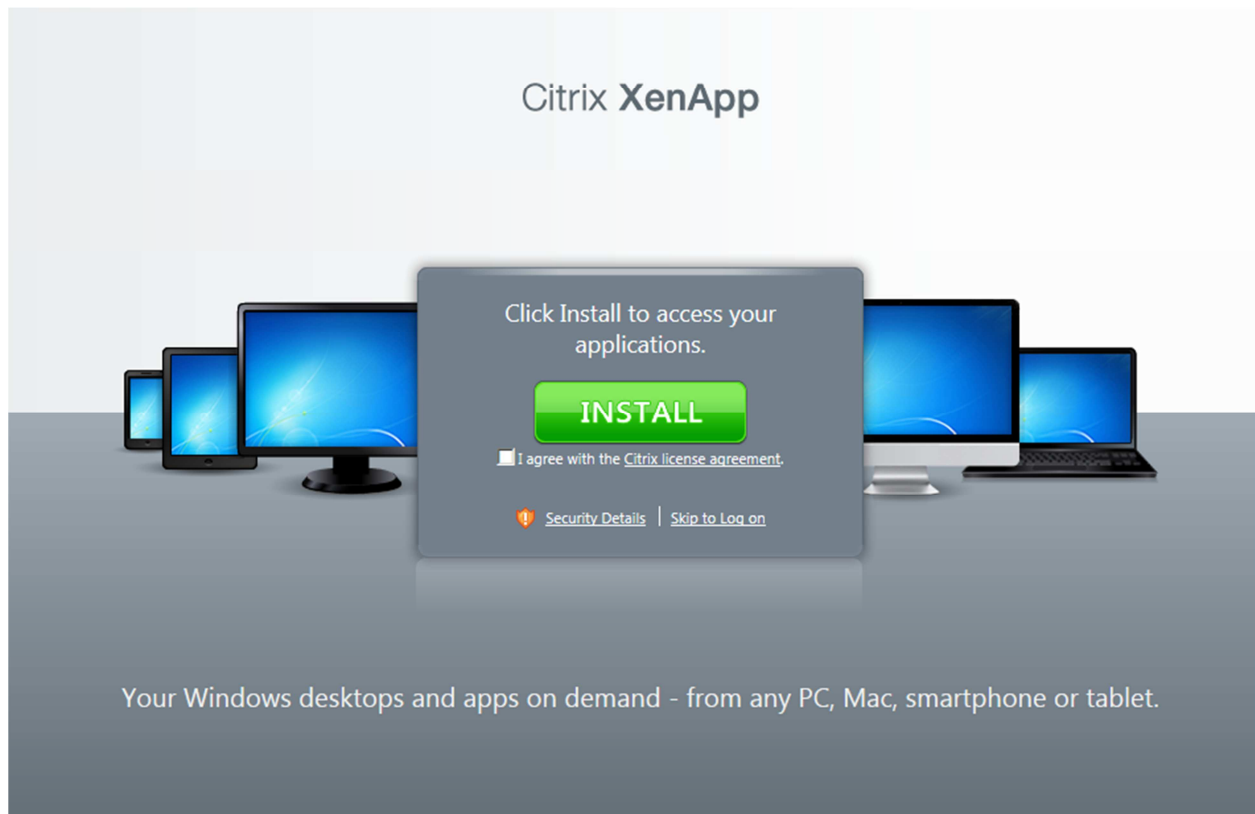


Click on "Sites"

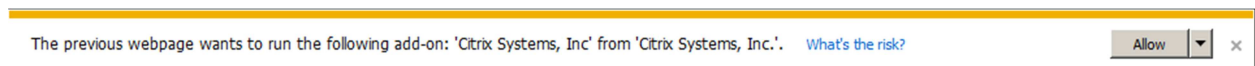


The correct website should already be ready to be added, if it isn't, type it the same way it's type in the print screen. Click Add then Close. On the next screen, click OK.

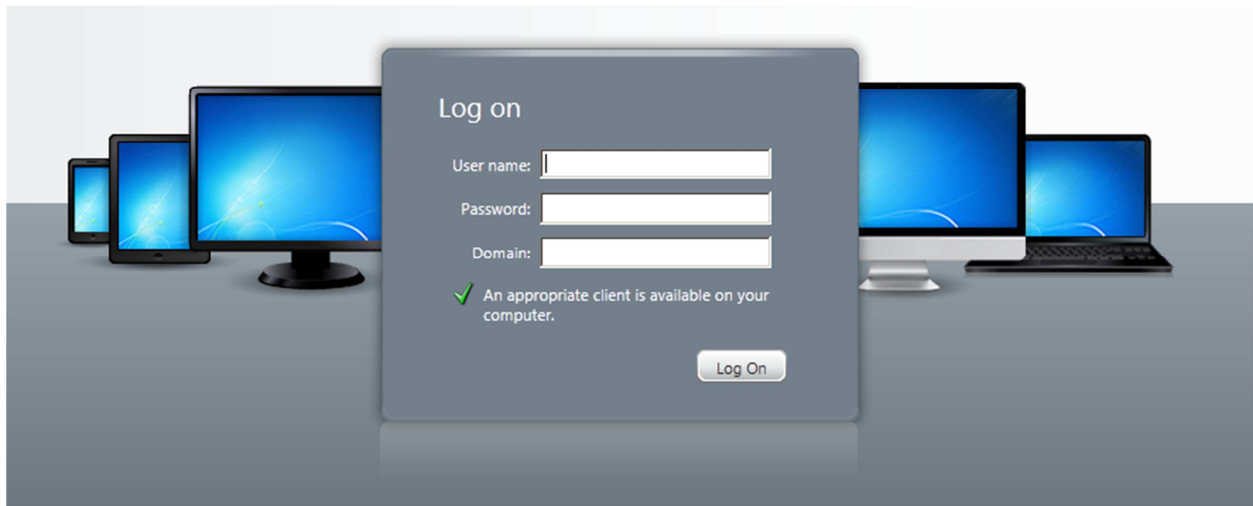
If it's your first time connecting to Citrix, you'll receive the following window :



Check the selection and click download. Make sure to execute the download once it's completed. If you have an Active X pop up (yellow bar at the top of the page or bottom if using IE9) click on it then "Execute the active X script" or simply click "Allow" if using IE9.



Once the install is complete, you'll be able to enter your information.



Username/Password are the same you usually use and the domain is SGT2000.

